

Upgrading the Firmware

Document Version	1.4	Release Date	07 September 2020
-------------------------	-----	---------------------	-------------------

Application information	Generic
Vehicle	Not Applicable
Model	Not Applicable
Year of manufacture	Not Applicable
PowerTRONIC application	All PowerTRONIC ECUs, from firmware version F.3.x onward

Note:

- Read through all instructions before installation and use.
- Ensure that the bike is switched off and the key is out of the ignition before proceeding with the installation.
- Some parts of the bikes might be hot/sharp and may cause burns/cuts. Proceed with extreme caution or wait until the bike has cooled down. Always wear safety gloves.
- When the installation is complete, make sure to secure the wiring loom away from the movable parts or components which tends to heat up during the normal operation of the vehicle at any chance.
- PowerTRONIC is intended for motorsport use on a closed course, please check with your local laws before using this product. Race Dynamics / PowerTRONIC is not liable for consequences arising out of using the product.

Support

Call/Whatsapp: +91 99162 29292 / +91 80409 29292
 E-Mail: support@powertronicECU.com
 Website: www.powertronicECU.com

REQUIREMENTS:

- 1) Windows PC with Genuine Windows Operating System (7/8/10) and have R-Tune software installed. (Refer R-Tune installation document)
- 2) Any file extracting software preinstalled (ex Winrar, Winzip, 7Zip)
- 3) Uninterrupted power supply.
- 4) USB Cable (A to B) provided within the kit.

WARNING:

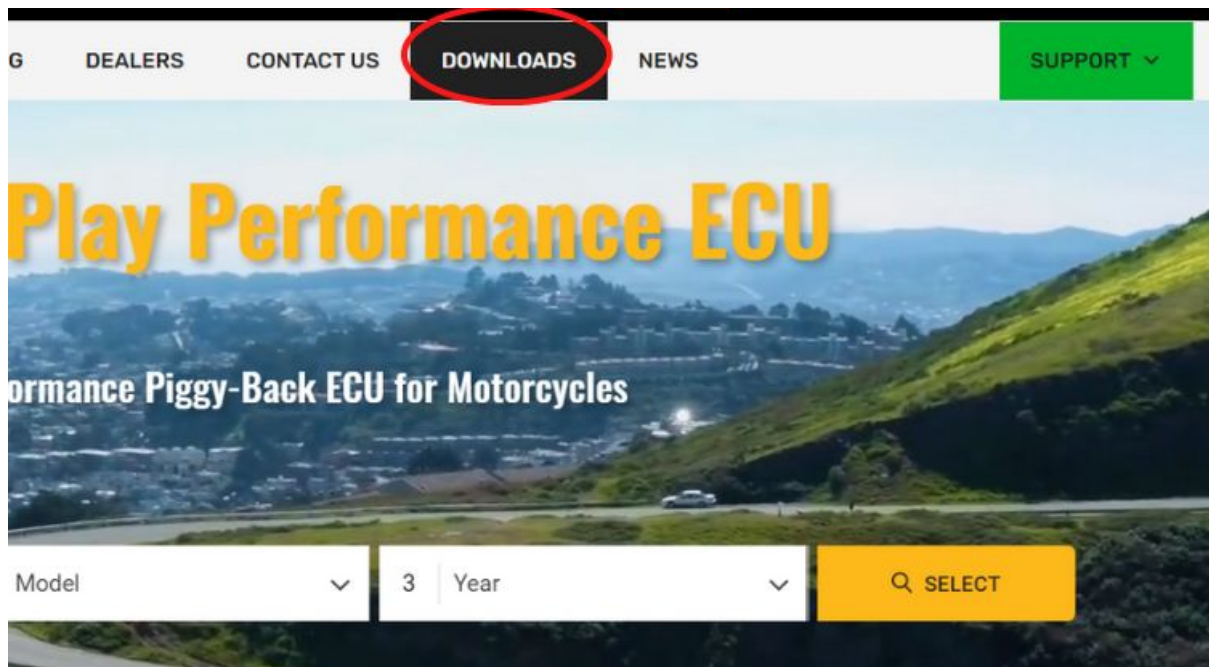
- 1) Disconnect the ECU from the vehicle before upgrading firmware.
- 2) The upgrade process after selecting the firmware file is automated. If the ECU is upgradeable/compatible with the new firmware version file, it will automatically start the process. If the ECU is not compatible with the new firmware version file, it will ask you to check for the correct upgrade version. At this point, you can cancel the process.
- 3) DO NOT touch/move the ECU once the upgrade process is started.
- 4) DO NOT click/turn off on the computer once the upgrade process is started.
- 5) DO NOT remove the USB cable once the upgrade process is started.

Downloading the firmware file.

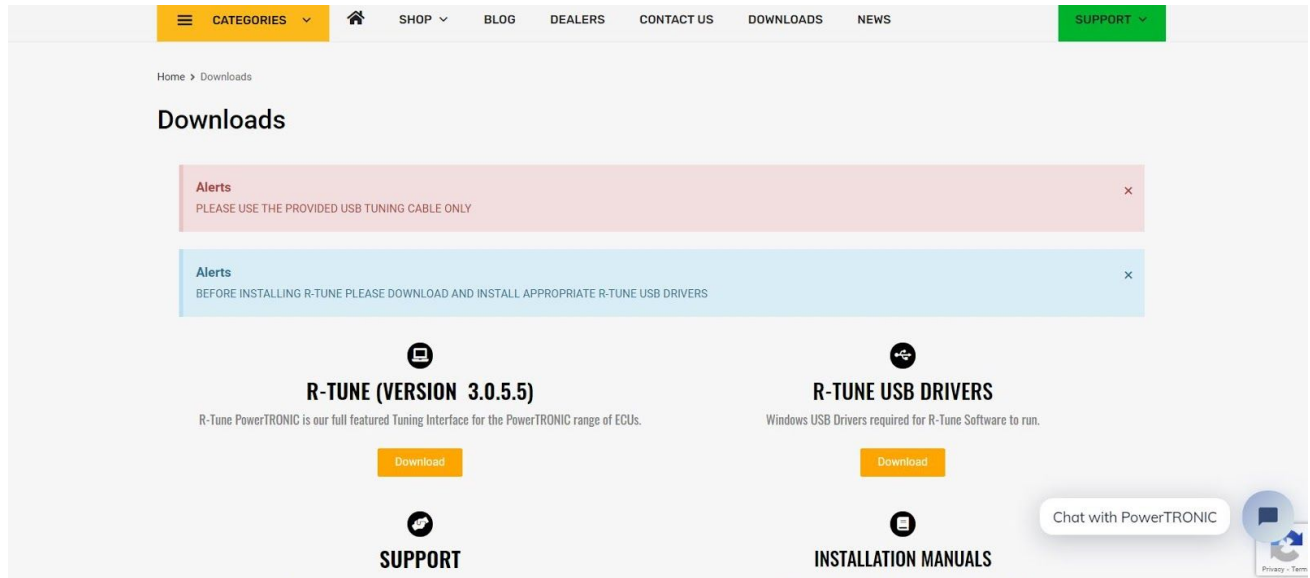
1) Go to www.powertronicecu.com



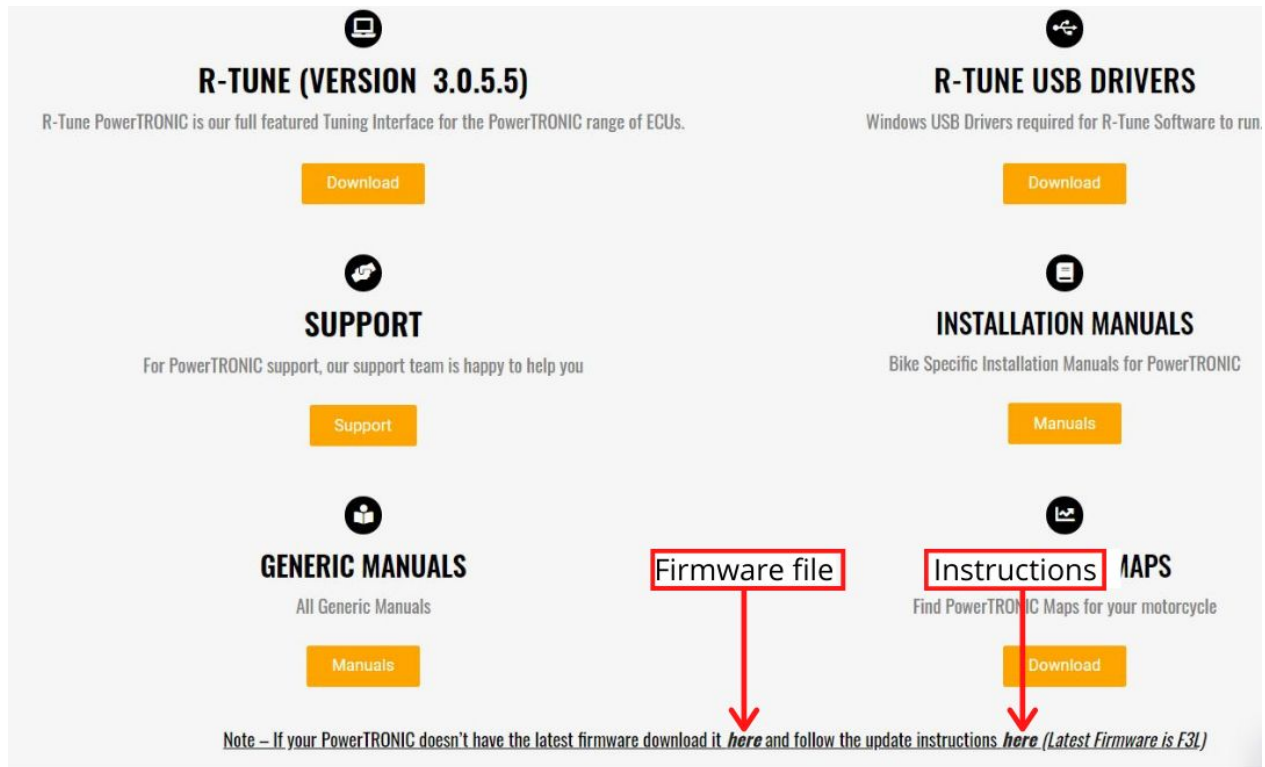
2) Click on [Downloads](#)



3) You will be directed to the [Downloads](#) section.



4) Scroll Down and you can see the Firmware file link and the instructions document link.



5) Click on them to download both. Refer the document before proceeding with the firmware upgrade process.

For PowerTRONIC support, our support team is happy to help you

Bike Specific Installation Manuals for PowerTRONIC

Support

GENERIC MANUALS

All Generic Manuals

Manuals

Manuals

PowerTRONIC MAPS

your motorcycle


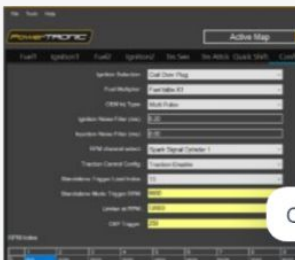
Download

Click to download
Click to download

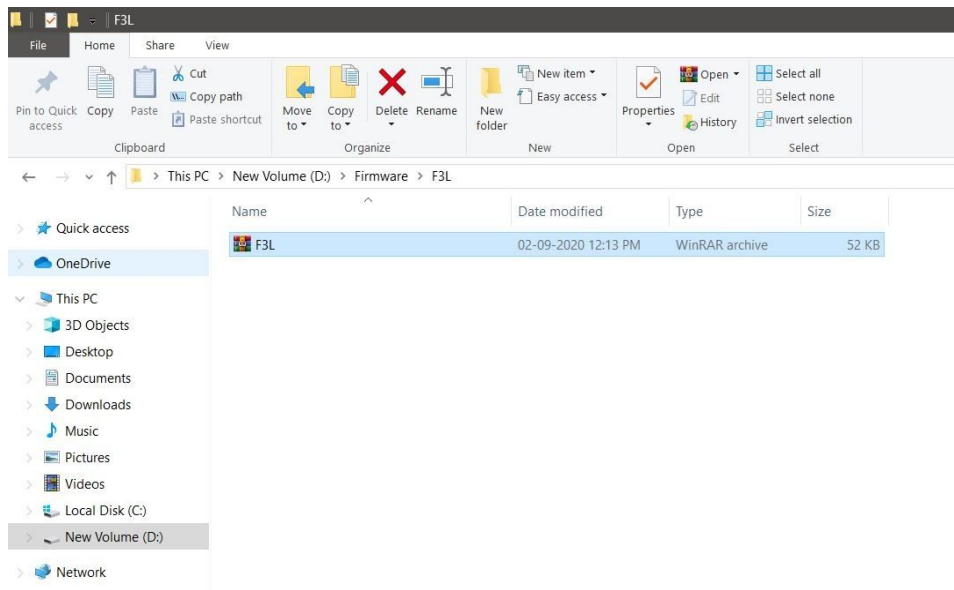
↓
↓

Note – If your PowerTRONIC doesn't have the latest firmware download it [here](#) and follow the update instructions [here](#) (Latest Firmware is F3L)

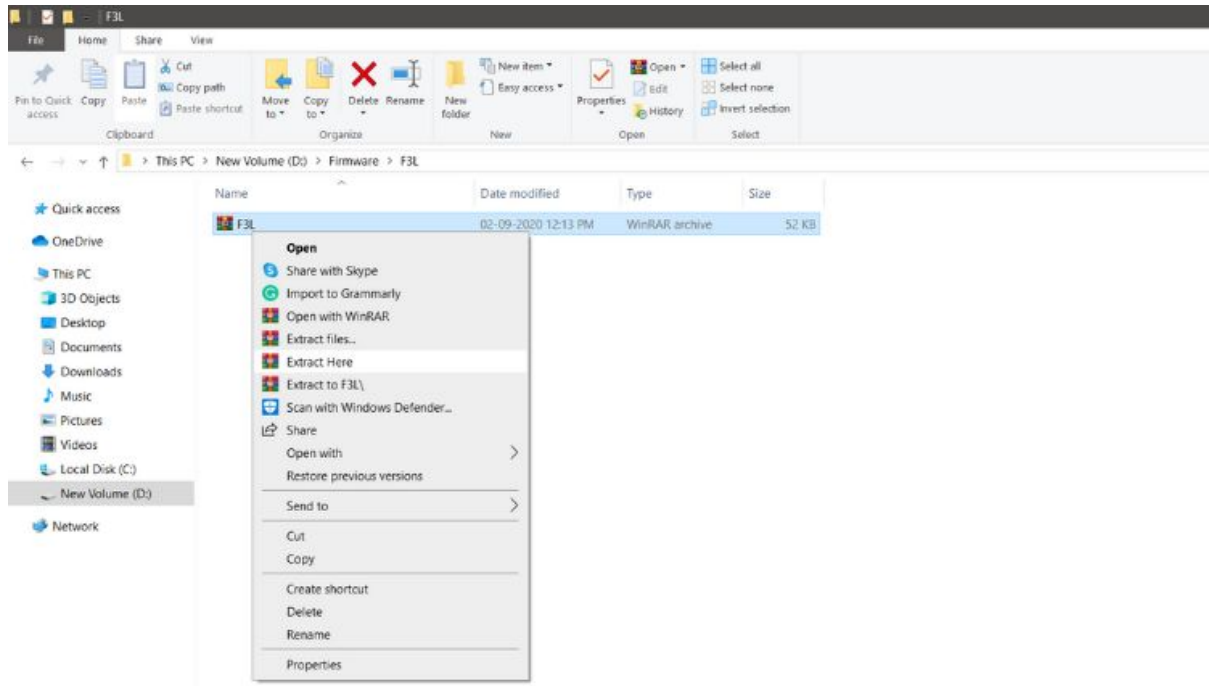
R-TUNEPT

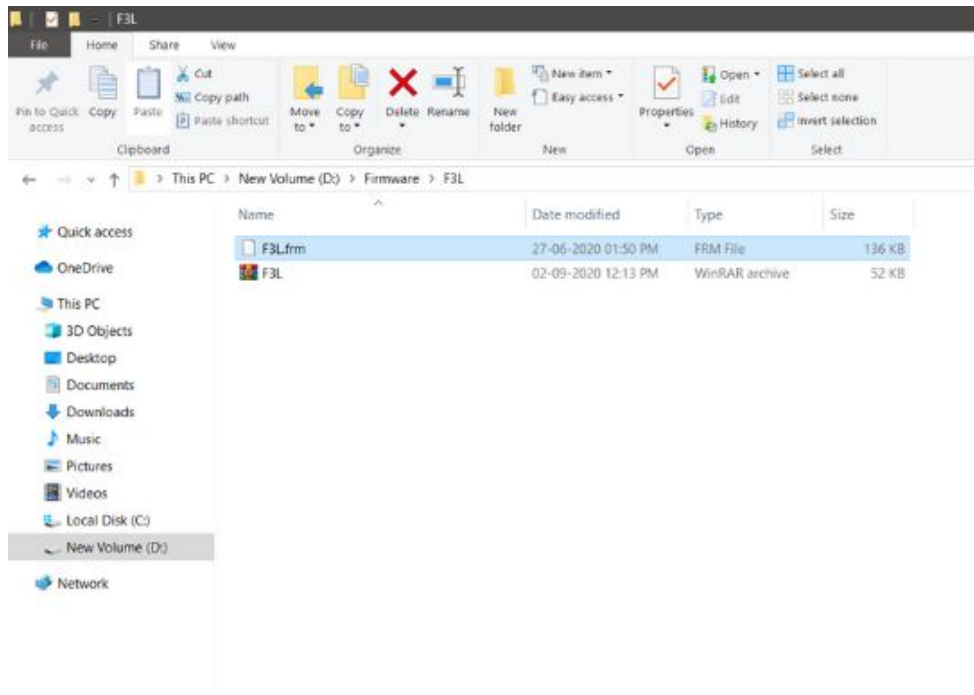
6) The compressed firmware file will be downloaded to your file folder. Refer to the image below.



7) Unzip or Extract the file using any file extracting software preinstalled (ex Winrar, Winzip, 7Zip) Refer to the image below. Here we are extracting the file using WinRAR software.

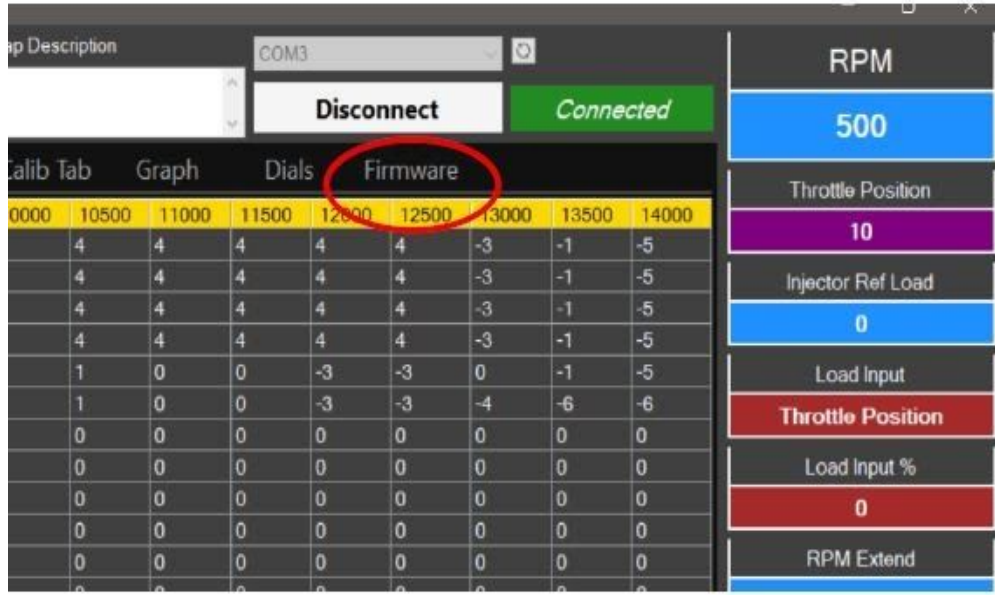


8) After extraction the firmware file will be available in the folder in the format of **.frm** file. Refer to the image below.

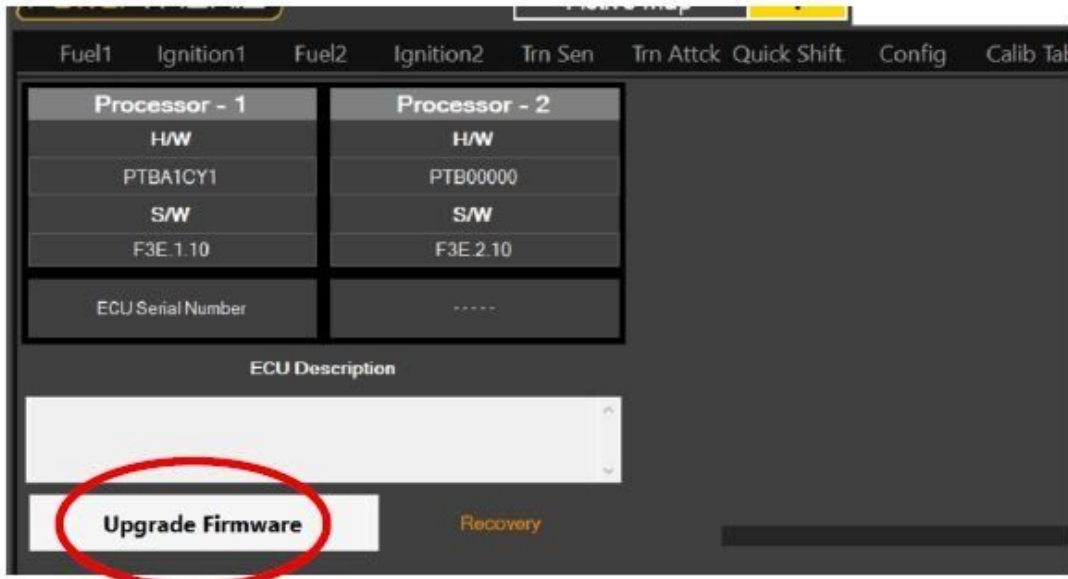


Upgrading the firmware.

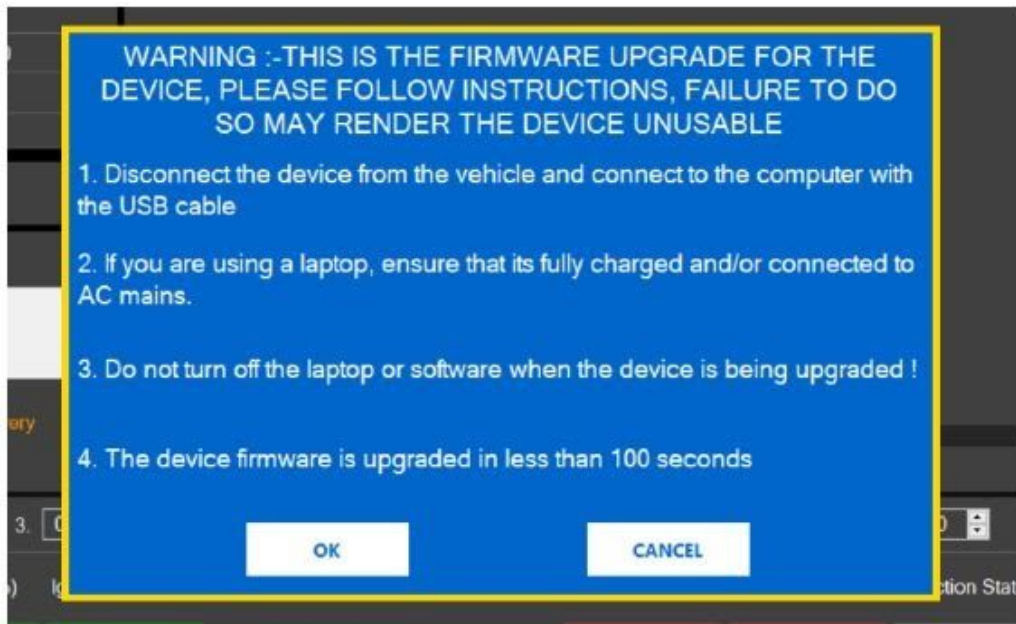
1. Connect PowerTRONIC ECU to the R-Tune software using the BAFO cable provided.
 - a) Select appropriate com port number
 - b) Click on **Connect** (Refer R-Tune installation and connecting to the ECU document)
 - c) Go to the **Firmware** tab (Refer the image)



2. Click **Upgrade Firmware** option



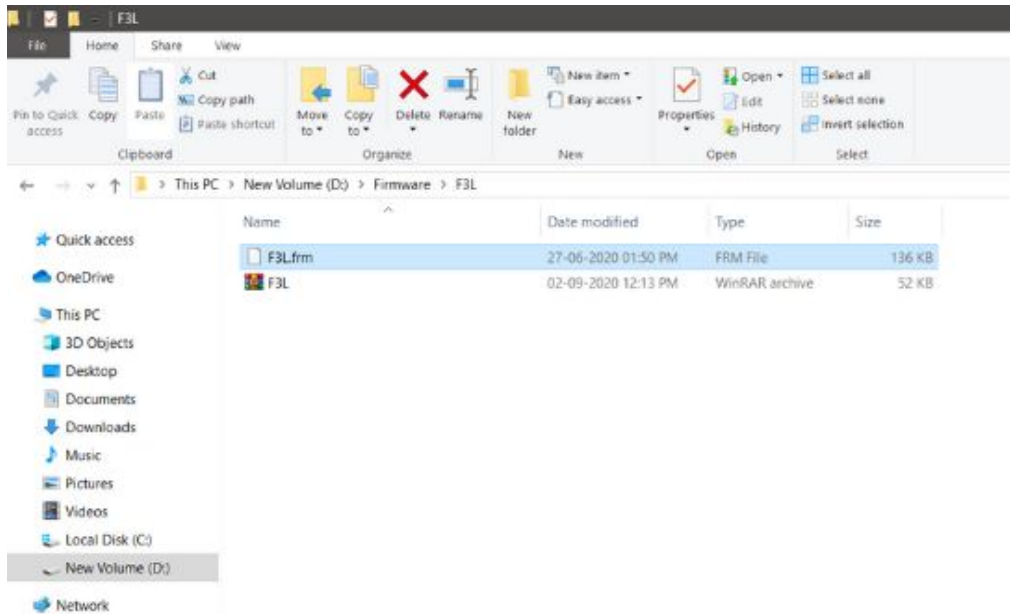
3. Read through the instructions displayed and click **OK**.



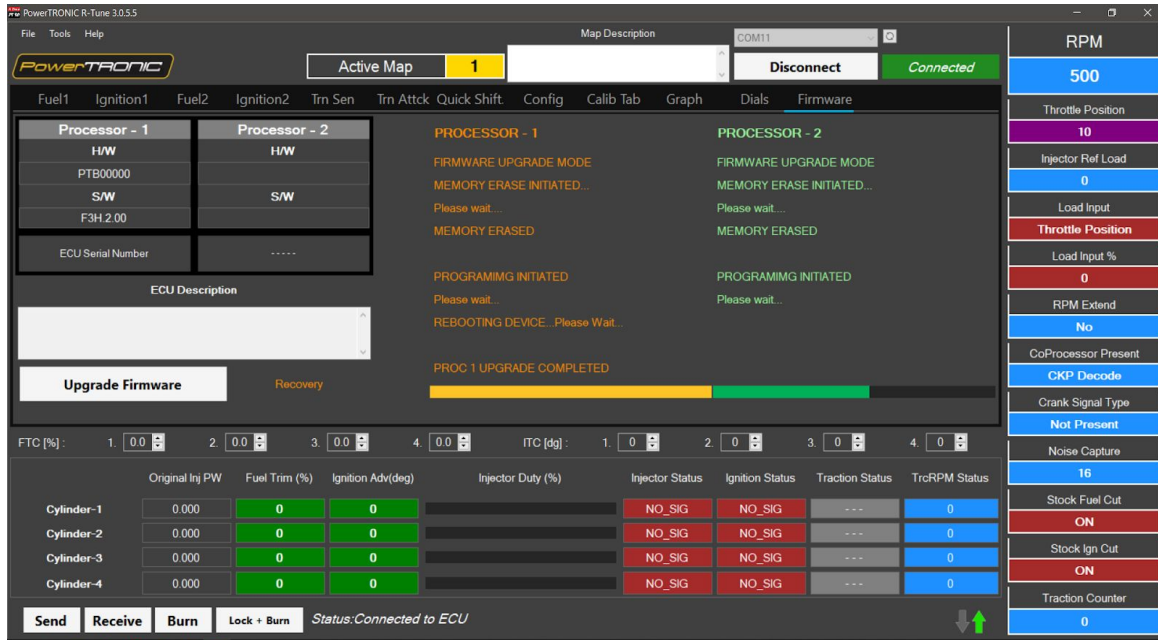
4. Click **Okay**.



5. Select the firmware file from the file manager and click **Open**.

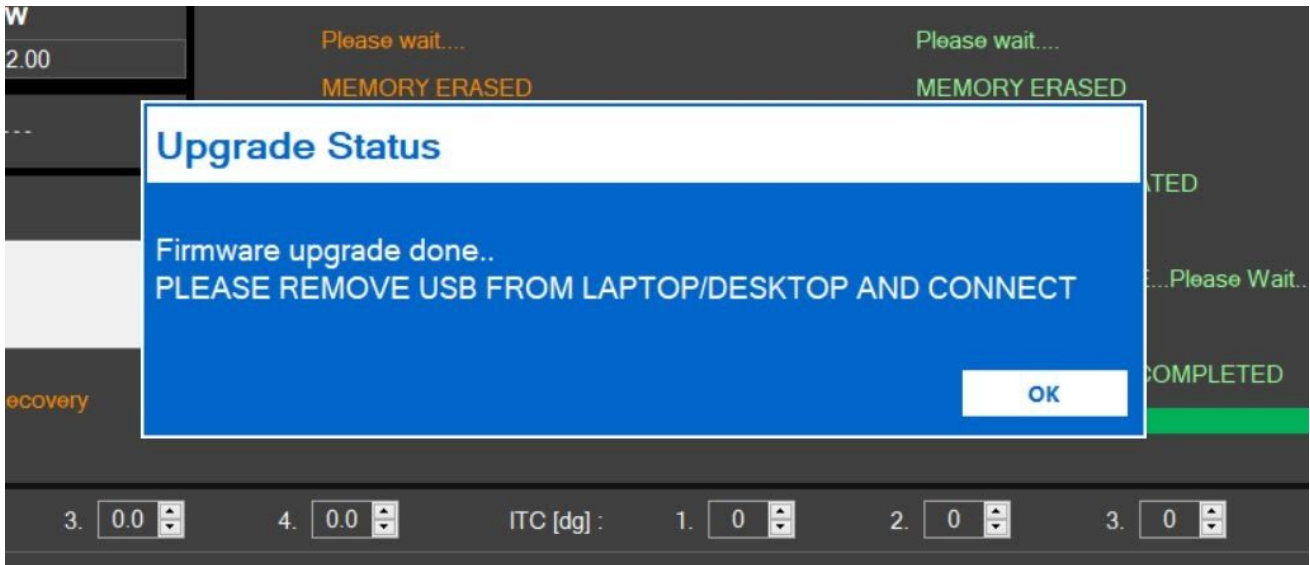


6. The firmware upgrade process will start automatically. Refer the Image below.

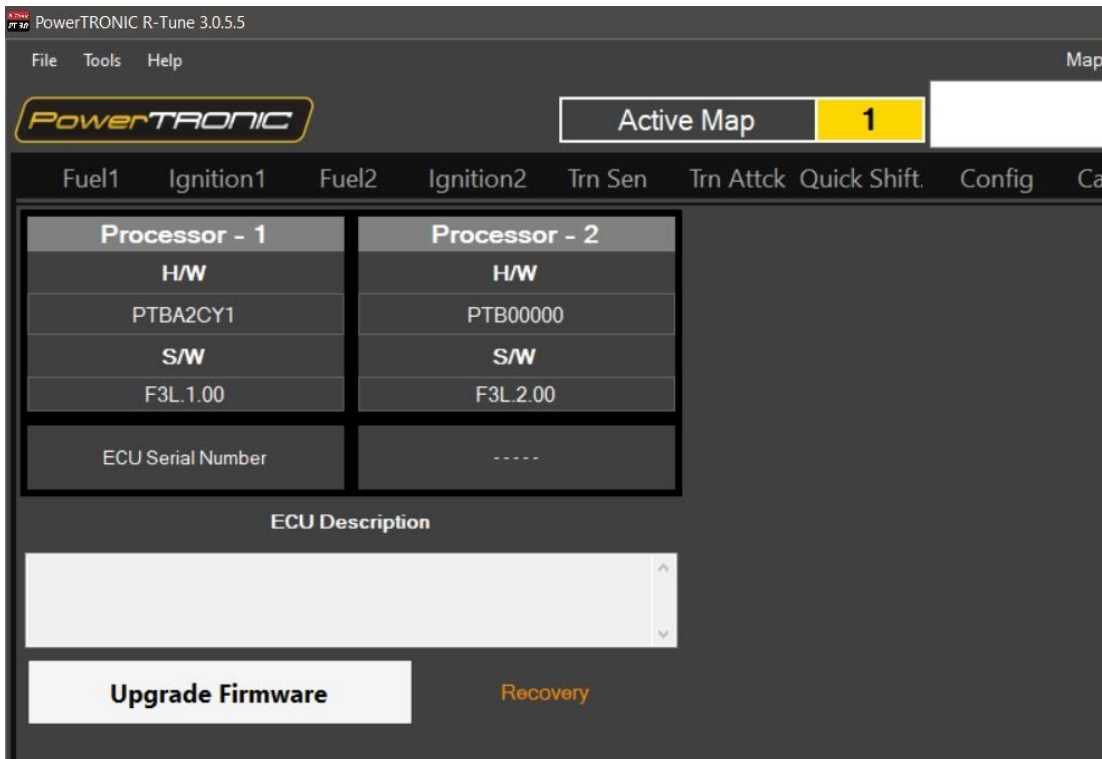


Caution: Upgrading the ECU would wipe all existing data on the ECU. Please make sure you have a fully charged battery or are connected to a power source for uninterrupted process.

7. Once the upgrade process is finished, one pop-up window will appear and ask you to remove the USB cable from the laptop and connect. Click on **OK** and remove the USB from Desktop/Laptop and Connect again.



8. You can verify the firmware version after reconnecting and receiving data from ECU. Refer to the image below.



---/End of Document/---